

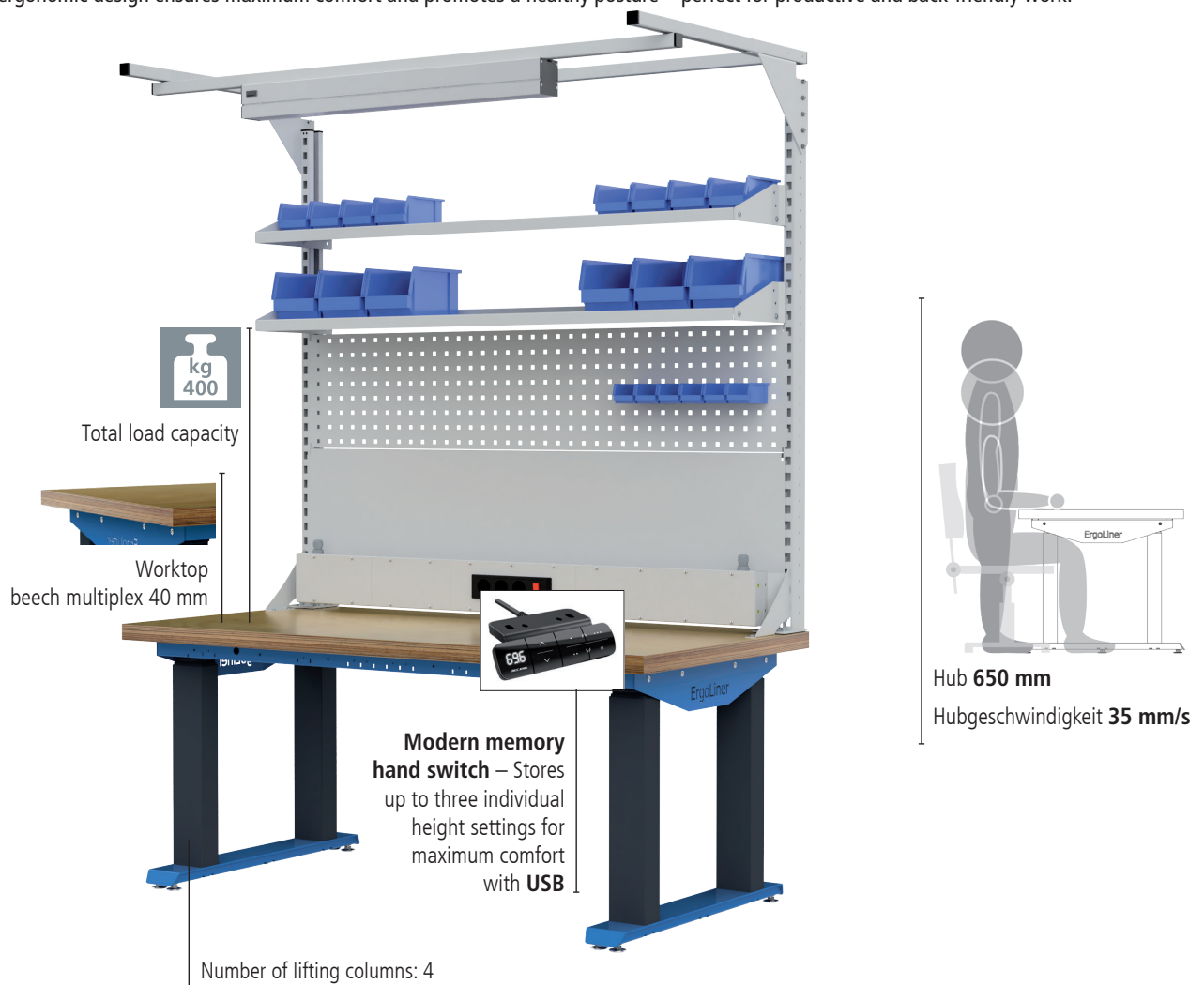
2025



NEW ergoliner®

This electrically height-adjustable desk stands out with its four powerful lifting columns, allowing you to customize the working height to your preference. With just the push of a button, you can set the desk to your preferred position thanks to three memory height settings.

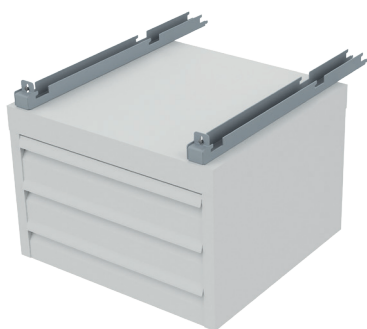
The ergonomic design ensures maximum comfort and promotes a healthy posture—perfect for productive and back-friendly work.



- Intelligent anti-collision system with adjustable sensitivity for optimal protection
- Extensive integration accessories such as power supply, multi-wall setup, or under-mounted cabinets
- Height-adjustable leveling feet up to 20 mm
- Very quiet operation with less than 50 dB

Item.-Nr.	Dimensions in mm (W x D x H)	Version	Price in €
EL415075B4	1500 x 750 x 650 -1300	Workstation with 40 mm beech multiplex worktop	1.999,00
EL420075B4	2000 x 750 x 650 -1300	Workstation with 40 mm beech multiplex worktop	2.149,00
EL415090B4	1500 x 900 x 650 -1300	Workstation with 40 mm beech multiplex worktop	2.059,00
EL420090B4	2000 x 900 x 650 -1300	Workstation with 40 mm beech multiplex worktop	2.199,00

Special discount valid



Support for hanging cabinets

- Essential for mounting hanging cabinets
- Packaging unit: 2 pieces

Item.-Nr.	Table depth in mm	Price in €
4XXXXX75TR	750	60,25
4XXXXX90TR	900	65,26



- 2x support column, 1x overhead frame, 1x equipment rail
- 1x LED lighting 28,9 W, 1290 lx
- 1x energy bar with 3x earthed sockets and on/off switch
- 3x shelf, 320 mm, 1x perforated wall

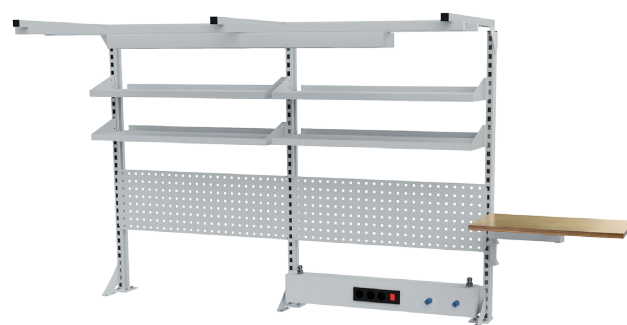
Item.-Nr.	Dimensions in mm (W x D x H)	Version	Price in €
03.900.15.25	1500 x 750 x 1250	Multi-board	1.256,34
03.900.15.25-1	1500 x 1250	Without overhead frame and lighting	788,57



Under-mounted drawer cabinet

- 4 x drawer, 100 mm
- Full-extension drawers (VA) 100%
- Each drawer with a 100 kg load capacity
- Ball-bearing slides

Item.-Nr.	Dimensions in mm (W x D x H)	Price in €
38.020	381 x 500 x 465	502,54
53.020	531 x 500 x 465	545,22
535/020V	555 x 736 x 465	775,76



- 3x support column, 1x overhead frame, 1x equipment rail
- 1x LED lighting 37,8 W, 1226 lx
- 1x energy bar with 3x earthed sockets and on/off switch
- 2x 1/4" compressed air connection, 4x shelf, 320 mm
- 2x perforated wall, 1x pivot arm with platform

Item.-Nr.	Dimensions in mm (W x D x H)	Version	Price in €
03.900.20.24	2000 x 750 x 1250	Multi-board	1.617,27
03.900.20.24-1	2000 x 1250	Without overhead frame and lighting	947,62



Verband
Lagertechnik
Betriebs-
einrichtung

bedrunka+hirth

Workplace up to date – mehr Raum zum Arbeiten

Offers apply to commercial and craft activities.

Technical and price variations are possible given the price of raw material. The price is calculated without VAT, except mistakes or omission. Valid until 30.09.2025. You'll find the general terms of Bedrunka+Hirth Gerätebau GmbH on our website <https://www.bedrunka-hirth.de/en-de>